



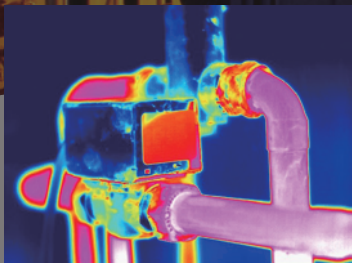
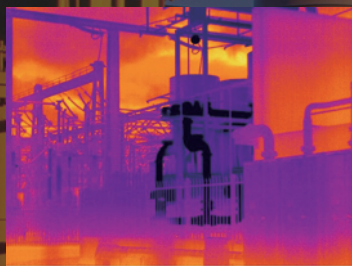
KT600

Fully automatic tool type thermal imager

KT600 Features

- Duo-vision PLUS technology
- Highly sensitive 640x480 detector
- Flip touch screen operation platform
- Full-time 50Hz video output
- Laser ranging function





Using advanced USB Type C interface, more than a little improvement

The new generation of USB Type C interface perfectly realizes the positive and negative plug-in charging without pressure; faster file transfer and longer service life.

KT600 has two focusing methods to ensure a sharply focused image

In order to meet the different needs of users for focusing, KT600 has two focusing modes: auto and motor. Users can switch freely according to their needs to ensure that they can get a perfect focus image every time.

The ultra-large capacity battery design allows the KT600 to have a longer operating time, combined with excellent performance, 8 hours of continuous work is no longer a problem.

KT600 Specification

Camera	KT600
Infrared	
Detector type	UFPA
Resolution	640x480
Thermal sensitivity	$\leq 0.05^{\circ}\text{C}@30^{\circ}\text{C}$
FOV/Minimum focusing distance	24°x 18°/0.15m
Spatial resolution	0.65mrad
Focus	Auto/Motor
Spectral range	8-14um
Image display	
Image mode	3.5" Capacitive touch screen
Display	IR/Visible light/Fusion/Duo-vision Plus
Visible light pixel	High Definition CCD, 5million pixels
Video output	NTSC (60Hz) or PAL (50Hz) composite video
Temperature measurement	
Temperature range	-20°C ~ +600°C , up to +1500°C(optional)
Measurement accuracy	$\pm 2^{\circ}\text{C}$ or 2% of readings
Measurement mode	8 movable spots, auto hot/cold capture spot, isotherm analysis, line analysis, 2 area analysis
Image storage	
Storage capacity	16G
Laser pointer	
Laser pointer	Class II, 1mW/635nm red
Ranging range	0.05 ~ 30 m
Power Systems	
Battery Type	Built-in rechargeable lithium ion battery
Charging port	Type-C
Battery working time	≥ 8 hours
Other	
Illuminator	YES
Bluetooth	Optional
Built-in memory	Yes
Real-time transmission	Optional USB real-time transmission, full temperature data format
Tripod mounting	1/4" _20