



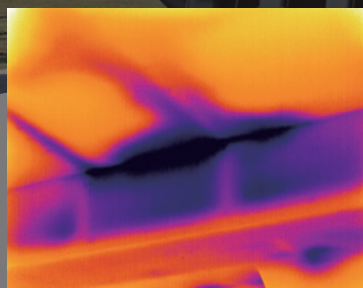
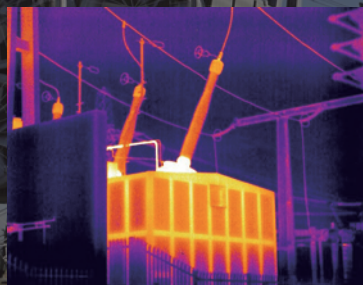
KT96

Maintenance Type Thermal Imager

KT96 Features

- Infrared/visible light Duo-vision technology
- Product performance is stable and reliable
- USB infrared data transmission in real time
- 5 inch LCD display remote control
- Infrared video, real-time dynamic recording
- A new generation of imported 640x480 detector





5-inch large LCD screen, zoom in on the subtle moments

Separate remote control handle design, integrated 5-inch super large LCD screen, perfectly presenting every detail you care about.

Humanized design, easy control

As a high-end infrared thermal imager, KT96 does not reduce the customer's control experience because of its powerful functions. Combined with the newly designed menu interface, you can control this powerful thermal imager with the touch of a button.

High-resolution, high-sensitivity detector

It adopts the latest generation of imported 640×480 detectors and provides more than 300,000 responding units. Each unit can dynamically sense in real time to provide the most accurate temperature value..

KT96 Specification

Camera		KT96
Infrared		
FOV / Minimum focusing distance		24°× 18°/0.5m
Spatial resolution		0.65mrad
Thermal sensitivity		≤0.05℃ @30℃
Detector type		UFPA
Detector resolution		640 × 480
Spectral range		8-14um
Focus		Motor/Auto
Image mode	IR	YES
	Visible	YES
	Fusion	YES
LCD display		5" TFT
Viewfinder		Built-in high-definition OLED viewfinder
Measurement range		-20℃ ~+600℃ , up to 2000℃ (optional)
Measurement accuracy		±2℃ or 2% of reading
Type		16GB removable SD card
Infrared video		YES
Others		
Illuminator		Yes
USB		Yes
Optional lens		7° , 12° , 48°