



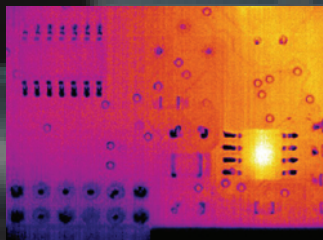
KT256

Entry-level thermal imager

KT256 Features

- Six kinds of pseudo-colors are available
- Long use time and large storage space
- Intuitive and fast temperature measurement function
- Multiple measurement ranges are available
- A variety of observation lenses to cope with different measurement environments





Wafer level package structure detector

Core components, quality assurance

Adjustable lens

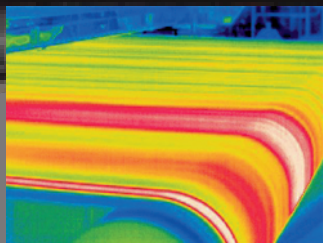
Both near and far targets can be clearly presented.

50HZ/60HZ high speed response

Full-time dynamic capture of every detail, never miss the tail

Laser pointer

Follow the shadow, accurately locate the defect



KT256 Specification

camera	KT256
Infrared	
FOV	55.6° x 42°
Thermal sensitivity	≤0.06°C@30°C
Detector type	UFPA
Resolution	256 x 192
Spectral range	8-14um
Focus	manual
Image display	
Display	3" TFT screen
Image frame rate	NTSC (60Hz) or PAL (50Hz) full dynamic output
Temperature measurement	
Temperature range	-20°C~+400°C
Measurement accuracy	±2°C or 2% of reading
Image storage	
SD card	Maximum support 16GB
Physical characteristics	
Weight	< 500g